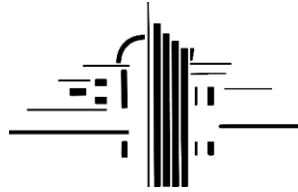


Malachi Gilmore Hall, Oberon Technical Specifications 2024



THE **MALACHI**



PO Box 104, Oberon NSW 2787
124 Oberon Street, Oberon NSW 2787

Proprietors:

Lucy East: 0401 262 260
Johnny East: 0402 556 259

E-mail: info@malachigilmorehall.com.au
Website: www.malachigilmorehall.com.au

AUDITORIUM

Flat entry via Foyer. Flat floor. Proscenium Stage. Flown Tri-truss (10100 x 4200 mm)



STAGE

Unraked stage with proscenium arch. No fly system.

Stage Dimensions

Width 8170mm

Depth to apron 3730mm

Depth to Proscenium 2900mm

Setting Line is the upstage edge of the proscenium arch.

Proscenium Arch	W 6000 mm	H 3560 mm
<i>Distance From (SL = Setting Line, CL = Centre Line)</i>		
SL to DS edge of apron	W 820 mm	
SL to first lighting bar	W 820 mm	
SL to second lighting bar	W 2050 mm	
SL to rear wall	W 2950 mm	
CL to OP wall	W 4030 mm	
CL to PS wall	W 4130 mm	
Stage to underside roof		H 3810 mm
Point loads for each lighting bar	TBA	

Overhead Obstructions

Teaser, FOH Track, Motorised screen, Border1, LX1, Border2, LX2, Upstage Tabs.

Stage Drapery

Type	Material	Colour	Width	Height	Quantity
Teaser Proscenium	Wool	Black	TBA	TBA	1
Grand Drape	TBA	TBA	TBA	TBA	2
Borders	Wool	Black	TBA	H 500 mm	2
Legs	Wool	Black	TBA	TBA	4
Upstage Tabs	Wool	Black	TBA	TBA	2

LIGHTING

Positions

Stage Grid:

LX 1 and LX 2 Bars, Rigging Grid, DMX & Data.

FOH Grid:

Hoist-controlled Tri-truss, DMX & Data.

Control

Lighting Desk Zero88 Lighting Console, Zero FLX series s24
24 Fader fully featured. Control up to 2048 over DMX or Ethernet



Power Distribution

Power distribution unit location is in equipment rack on mezzanine Balcony.

Power Dist. LSC Lighting APS 12ch x 10A rack 3RU
With combined RCD and MCB per channel. Staggered power-up of outputs.



Power Dist. Powerwise PD1215 12ch x 15A of 2.4kVA per output,
master RCD and isolator switch.



House Lights

Qty 6 Independent 'heritage' pendant lights (manually dimmed via wall panel in auditorium).

Control Positions

Mix position is on mezzanine Balcony.

Network cable allows control via Zero88 iOS / Chrome apps. DMX extension cable allows desk to be brought down to auditorium floor.

Haze Machine

Look Solutions Unique 2.1 DMX controlled, variable output and haze density. Deflector.



Lamp List

Make	Model	Angle	Detail / Accessories	Watts	Qty	Spec
------	-------	-------	----------------------	-------	-----	------

Downlights

Altman	Chalice 100W LED Downlight (3000K – 5000K Tuneable White Light		Black housing, DMX, Yoke Mount, Narrow Flood Spread Glass Lens	100	8	
--------	--	--	--	-----	---	--

Fresnels

ShowPro	LED Fresnel RGBAL DMX Zoom	15 – 45 degrees	Zoom Barndoor	230	8	
---------	----------------------------	-----------------	---------------	-----	---	--

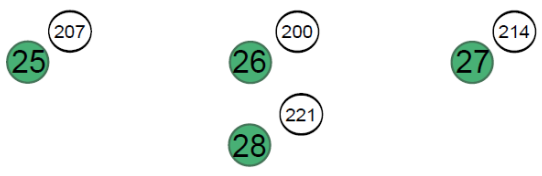
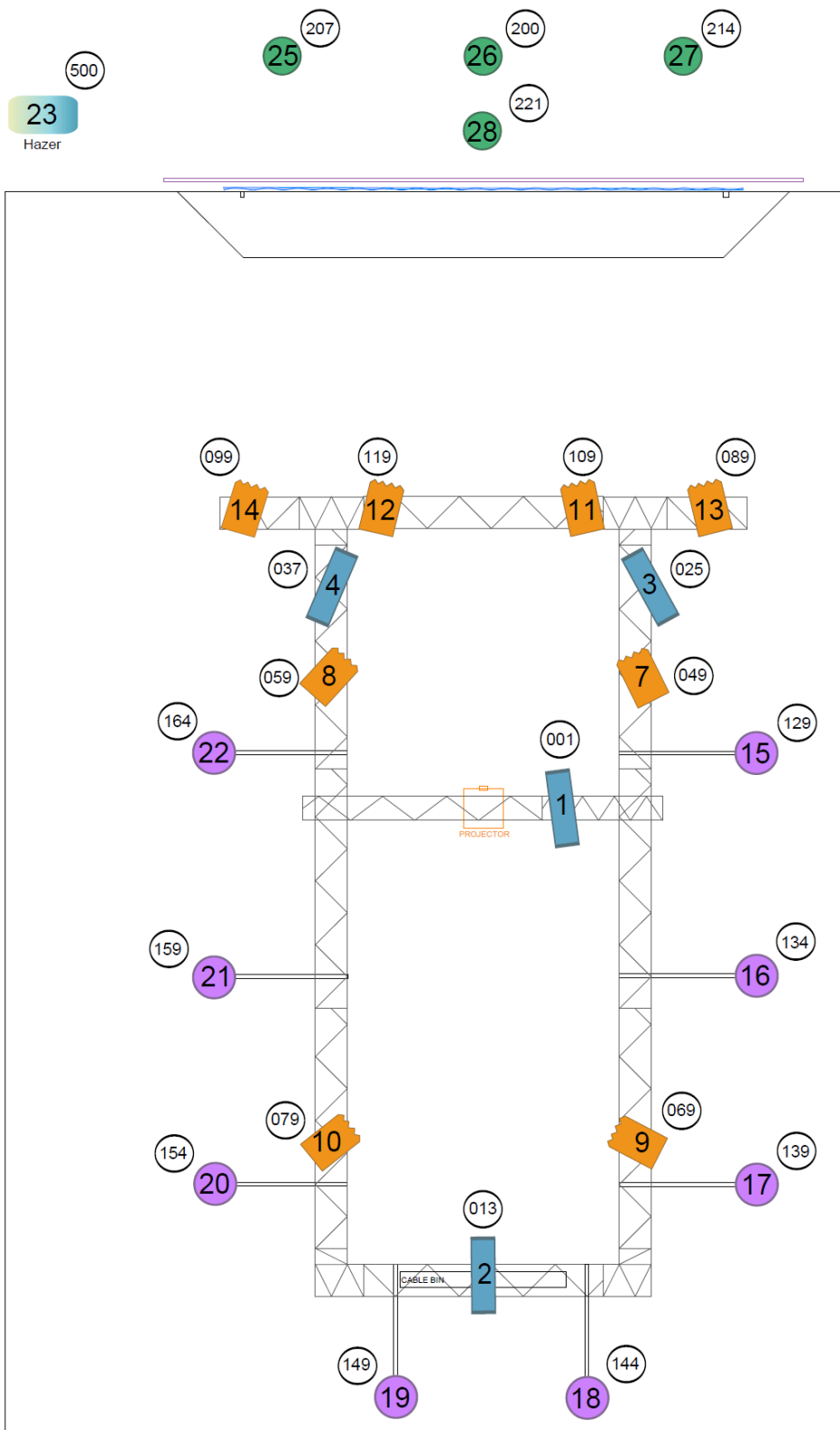
Profiles

ShowPro	Fixture, LED, Engine, Profile FC	15 – 30 degrees	Lens Tube HP/FC (15-30 degree)	250	4	
---------	----------------------------------	-----------------	--------------------------------	-----	---	--

Movers

Beamz	MLH74 Mini Moving Head 7X 10W 4-in1 LED	20 degrees	RGBW colour mixing	7x 10	4	
-------	---	------------	--------------------	-------	---	--

Lighting Plan



SOUND

Speakers

Front of House

Make	Model	Location	Detail / Accessories	Watts	Qty	Spec
DB Technologies	VIO X205-100	Main L/R wall-mounted powered speakers	2 Way Active Loudspeaker, 126 dB	400W RMS	2	(i)
DB Technologies	SUB618	Subwoofers under stage	Active 18" Subwoofer. 600W, RMS, C	600W RMS	2	(i)
DB Technologies	LVX P5-16	Auditorium surround-sound. Powered from rack-mounted Audio Power Amplifier DSA-500Q (4-channel, Class D)	Passive Loudspeaker, 16ohm. 5" LF	120W	4	(i)

Stage

Make	Model	Location	Detail / Accessories	Watts	Qty	Spec
DB Technologies	VIO X205-100	Centre\Dialogue (or Foldback) powered speaker	2 Way Active Loudspeaker, 126dB	400W RMS	1	(i)
QSC	K8.2	Foldback\Multi-purpose	2 Way Active Loudspeaker, 128dB	1800W (LF) 225 W (HF)	2	(i)

Digital Mixer

Allen & Heath Qu-SB, Ultra-compact digital mixer, 18 input, 14 output. (i)

Control Position

Tech Wi-Fi available for remote control via Qu-SB for Digital Console App Qu-Control (Apple iPhone) and Qu-Pad (Apple iPad) only. An Apple iPad is available with Qu-Pad installed. (i)

Surround Sound Receiver

NAD T 758 V3, 7.1CH DOLBY ATMOS AV Receiver. (i)

Sources include Blu-Ray Player, Audio 3.5mm jack, HDMI, USB.

Stage Box

Allen & Heath HD Audio Rack AB 168, 16 XLR Input, 8 XLR Output, 48 kHz. (i)

Can be located on stage or on auditorium floor.

Stage Items

Microphones

Make	Model	Description	Qty	Spec
Sennheiser	EW100G4-935-S-B	Wireless Hand-Held Microphone	2	(i)
Lewitt	MTP 550 DM	Dynamic Vocal Microphone	1	(i)
Shure	SM58	Dynamic Vocal Microphone	1	(i)
Shure	SM57	Dynamic Instrument Microphone	2	(i)

Stands

Make	Model	Description	Qty	Spec
K&M	210/6B	Tall Microphone Boom Stand Black	2	(i)
K&M	260	Round Base Straight Stand	1	(i)
K&M	25950	Short Mic Stand	2	(i)

D.I. Boxes

Make	Model	Description	Qty	Spec
Klark Technik	DN100V2	Active DI Box with Extended Dynamic Range	2	(i)
Klark Technik	DN200V2	2-Channel Active DI Box with Extended Dynamic Range and Sum/Split Options	1	(i)

PROJECTION

Multimedia Projector

Epson EB-G7905UNL



7000 Lumens, RGB Liquid Crystal projection system, WUXGA (1920 x 1200).

Lenses

Make	Model	Description	Details	Spec
Epson	ELPLM08	Middle Throw Zoom Lens	Zoom ratio 1 to 1.6. WUXGA Throw Ratio 1.42 to 2.28. Lens Shift +/-67% Vertical, +/-30% Horizontal	(i)
Epson	ELPLU03	Short Throw Zoom Lens	Zoom ratio 1 to 1.2. WUXGA Throw Ratio 0.65 to 0.78. Lens Shift +/-67% Vertical, +/-30% Horizontal	(i)

Screen

Stage

250" 5535x3115 Max Image Size Screen (16:9) + Blk Borders 1:1 Gain PVC White Screen

Floor

Projector can be configured with Short Throw lens to project onto floor.

Control Positions

Stage - Presentation

E.g., Laptop presentations. HDMI to projector via Visionary Inc. AV over IP endpoint into stage wall-panel. The 2-Channel D.I. Box is to be used for the audio via wall-panel 2x XLR.

Mezzanine Balcony

NAD Receiver can take HDMI or USB from a Laptop, and HDMI from Blu-Ray. HDMI to projector via Visionary Inc. AV over IP endpoints.



Blu-Ray Player

Panasonic DP-UB450GN 4K HDR



BACKLINE

Drum Kit

Gretsch Catalina Birch, 6 Piece



8/10/12 mounted toms, 14" floor tom, 22" bass drum, 14" snare.

Hi-hats, ride and crash available.

Bass Amp

Fender Bassman 200, Combo 200 W

